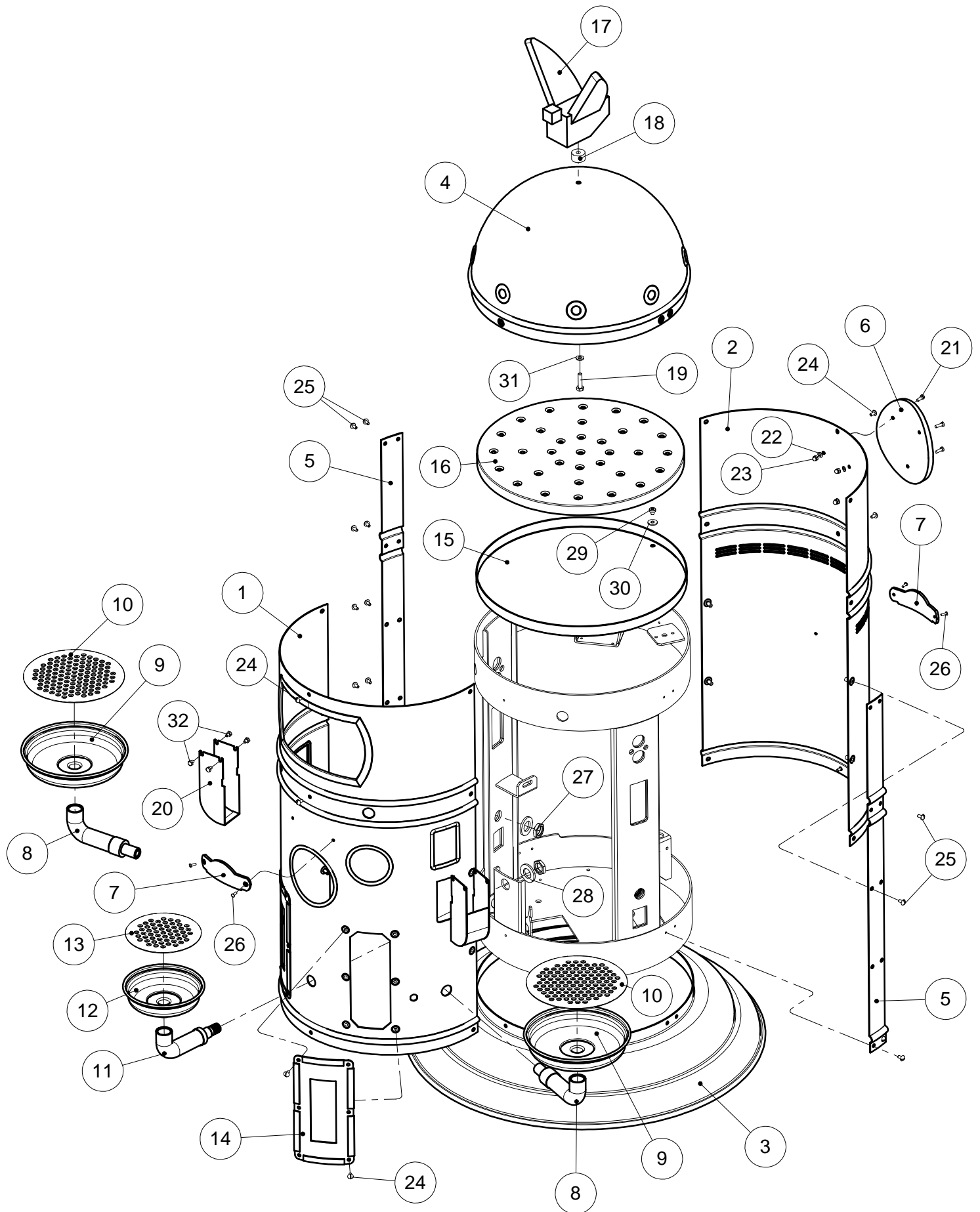


ELEKTRA



BELLE EPOQUE

VERTICALE 2GR

T10)

VARIE DI CARROZZAMENTO

BODY VARIOUS

ARTICOLI: P1,P1C
BELLE EPOQUE 2GR
ARTICLES: P1,P1C
BELLE EPOQUE 2GR

T10-VARIE DI CARROZZAMENTO
BODY VARIOUS

| Pos. | Descrizione | Description | Cod. |
|------|--|--|----------|
| 1 | Carrozzeria anteriore rame lucido | Front body – polished copper | 04915019 |
| 1 | Carrozzeria anteriore cromo | Front body – chrome | 04915021 |
| 2 | Carrozzeria posteriore rame lucido | Back body – polished copper | 04916019 |
| 2 | Carrozzeria posteriore cromo | Back body – chrome | 04916021 |
| 3 | Base ottone lucido | Base – polished brass | 02684019 |
| 3 | Base cromo | Base – chrome | 02684021 |
| 4 | Cupola ottone lucido | Dome - polished brass | 02682019 |
| 4 | Cupola cromo | Dome – chrome | 02682021 |
| 5 | Fascia decorata ottone lucido | Band - polished brass | 02691019 |
| 5 | Fascia decorata cromo | Band – chrome | 02691021 |
| 6 | Stemma rilievo oro/fondo giallo pergamena | Badge – gold/yellow | 02859062 |
| 6 | Stemma rilievo rosso ven/fondo argento | Badge – red/silver | 02859064 |
| 7 | Targa curva rilievo oro/fondo giallo pergamena | Plate – gold/yellow | 02637018 |
| 7 | Targa curva rilievo rosso ven/fondo argento | Plate – red/silver | 02636018 |
| 8 | Pipa scarico grande ottone lucido | Big drain tube – polished brass | 02688019 |
| 8 | Pipa scarico grande cromo | Big drain tube – chrome | 02688021 |
| 9 | Portapiatto grande ottone lucido | Big plate support – polished brass | 00573096 |
| 9 | Portapiatto grande cromo | Big plate support – chrome | 00573097 |
| 10 | Piatto forato grande ottone lucido | Big plate - polished brass | 02687019 |
| 10 | Piatto forato grande cromo | Big plate – chrome | 02687021 |
| 11 | Pipa scarico piccola ottone lucido | Small drain tube – polished brass | 01468019 |
| 11 | Pipa scarico piccola cromo | Small drain tube – chrome | 01468021 |
| 12 | Portapiatto piccolo ottone lucido | Small plate support – polished brass | 00570096 |
| 12 | Portapiatto piccolo cromo | Small plate support – chrome | 00570097 |
| 13 | Piatto forato piccolo ottone lucido | Small plate – polished brass | 00571019 |
| 13 | Piatto forato piccolo cromo | Small plate – chrome | 00571021 |
| 14 | Porta rame lucido | Door – polished copper | 02677019 |
| 14 | Porta cromo | Door – chrome | 02677021 |
| 15 | Portatazze | Cup heater tray | 04914052 |
| 16 | Griglia | Cup heater grille | 02681014 |
| 17 | Aquila ottone lucido | Eagle – polished brass | 00578019 |
| 17 | Aquila cromo | Eagle – chrome | 00578021 |
| 18 | Supporto aquila ottone lucido | Eagle support - polished brass | 00577019 |
| 18 | Supporto aquila cromo | Eagle support – chrome | 00577021 |
| 19 | Vite M6x25 ottone | Screw M6x25 – brass | 01708014 |
| 20 | Coprielettrovalvola ottone lucido | Solenoid valve cover - polished brass | 02398019 |
| 20 | Coprielettrovalvola cromo | Solenoid valve cover – chrome | 02398021 |
| 21 | Vite M4x12 ottone lucido | Screw M4x12 – polished brass | 00114026 |
| 21 | Vite M4x12 inox | Screw M4x12 – inox | 00114035 |
| 22 | Rondella piana dia. 4 inox | Plain washer dia 4 - inox | 01505035 |
| 23 | Dado cieco M4 inox | Cap nut M4 - inox | 02886035 |
| 24 | Vite testa tonda M4x8 ottone lucido | Roundheaded screw M4x8 – polished brass | 01574026 |
| 24 | Vite testa tonda M4x8 cromo | Roundheaded screw M4x8 – chrome | 01574021 |
| 25 | Vite testa tonda M4x12 ottone lucido | Roundheaded screw M4x12 – polished brass | 01575026 |
| 25 | Vite testa tonda M4x12 cromo | Roundheaded screw M4x12 – chrome | 01575021 |
| 26 | Rivetto 3x8 rame | Rivet 3x8 – copper | 00207035 |
| 26 | Rivetto 3x8 alluminio | Rivet 3x8 – aluminium | 00365035 |
| 27 | Controdado 3/8 ottone | Lock nut 3/8 – brass | 01290014 |
| 28 | Rondella M17 inox | Washer M17 – inox | 01291035 |
| 29 | Vite M5x6 inox | Screw M5x6 – inox | 02245035 |
| 30 | Rondella M5x15 | Washer M5x15 | 01480035 |
| 31 | Rondella M6,5x12x1,6 ottone | Washer M6,5x12x1,6 - brass | 00148035 |
| 32 | Vite M4x6 inox | Screw M4x6 – inox | 01026015 |